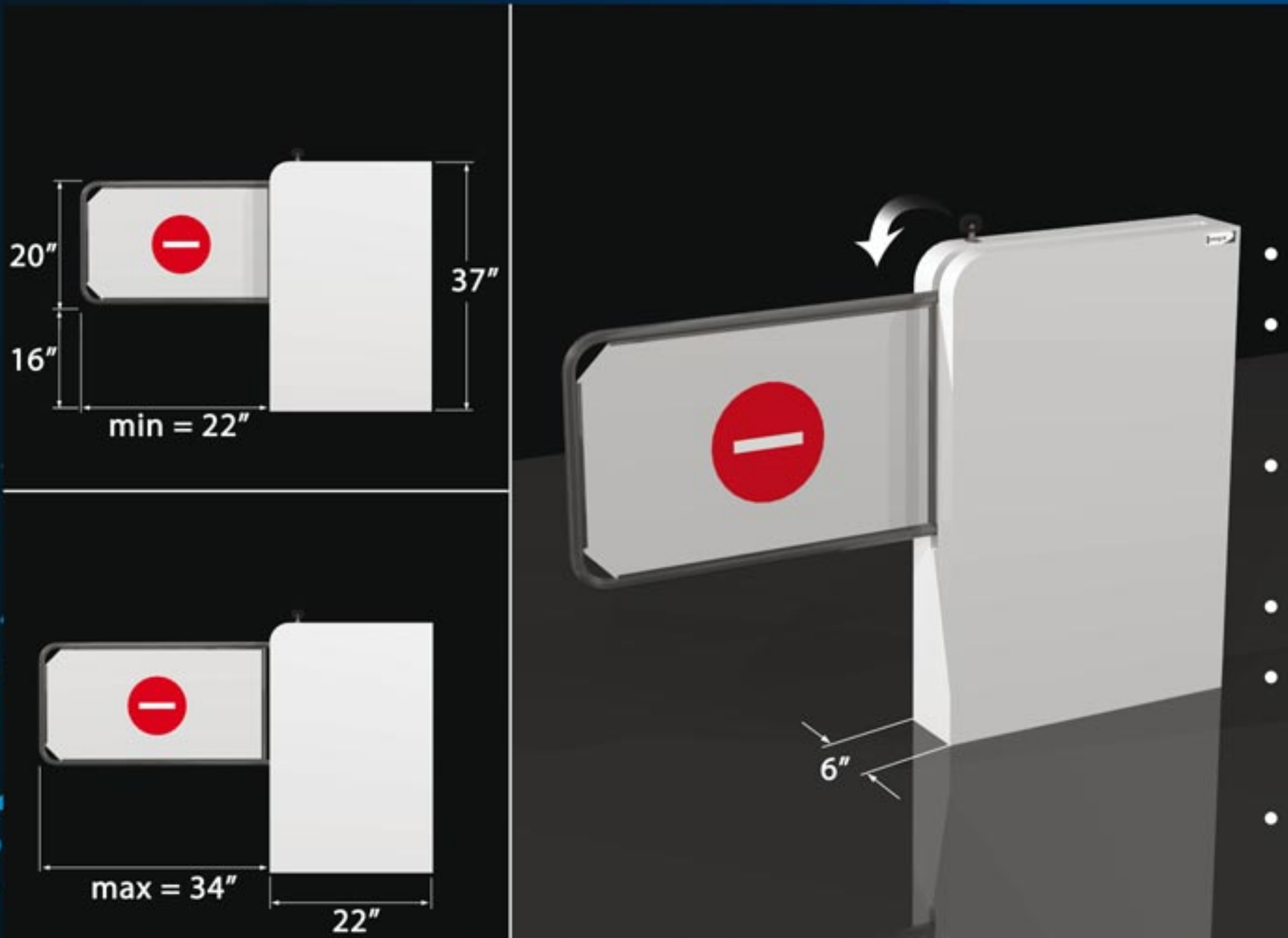
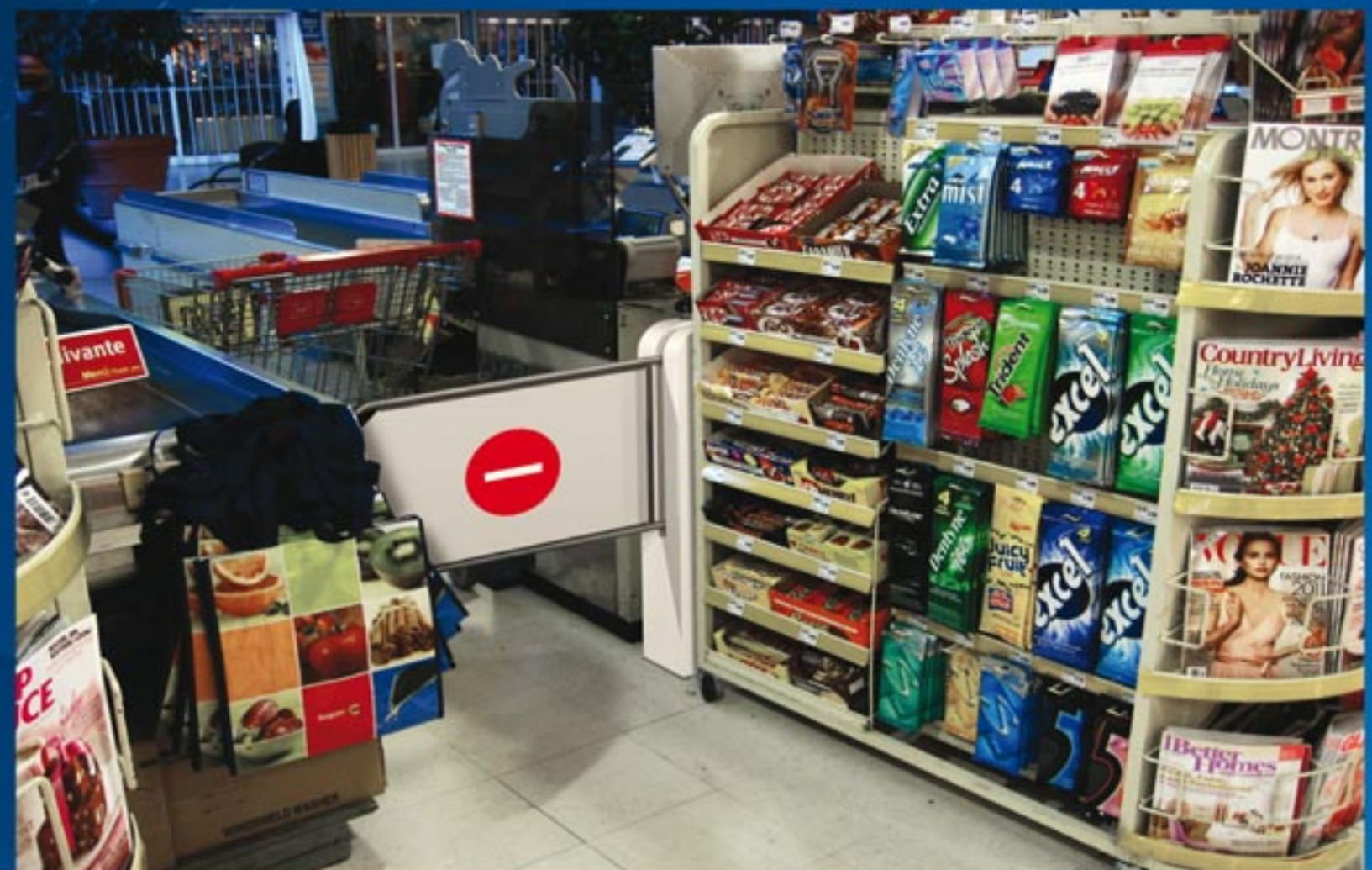


Integral Lane Gate P/N- LG37

Integral is proud to announce the addition of its new lane closure system to its family of unique and innovative retail security products. The LG37 is a retractable lane gate system. It is designed to be concealed when installed, and to provide a substantial deterrent to shop lifters attempting to walk through unattended lanes, while at the same time providing an ease of use for store employees



Key features and benefits:

- Retrofitable to most store check out lanes
- Able to accommodate variable lane widths, from 22" to 36"
- Robust steel design and construction with sleek exterior
- Lockable in the lane closed position
- Dampened and counter balanced to work with minimal force, up or down
- Easy installation with floor anchors

For more information call (866) 940-GATE or visit www.integraltech.ca